

# Contributions to the knowledge of Norwegian Tachinidae (Diptera, Oestroidea) – Part 2

HÅKON HARALDSEIDE

Haraldseide, H. 2014. Contributions to the knowledge of Norwegian Tachinidae (Diptera, Oestroidea) – Part 2. *Norwegian Journal of Entomology* 61, 213–218.

Records are given for 284 specimens representing 56 species in 43 genera of tachinid flies from Norway. *Bactromyia aurulenta* (Meigen 1824), *Mintho rufiventris* (Fallén, 1817) and *Paratryphera bisetosa* (Brauer & Bergenstamm, 1891) are recorded in Norway for the first time.

Key words: Diptera, Tachinidae, *Bactromyia aurulenta*, *Mintho rufiventris*, *Paratryphera bisetosa*, new records, Norway.

*Håkon Haraldseide, Ålavikvegen 4, NO-4250 Kopervik, Norway. E-mail: hharaldseide@gmail.com*

## Introduction

This paper is a direct continuation of Haraldseide (2012). Presented below are 284 records from 15 localities in Norway (Figure 1) representing 56 species in 43 genera, including three new species for Norway: *Bactromyia aurulenta* (Meigen, 1824), *Mintho rufiventris* (Fallén, 1817) and *Paratryphera bisetosa* (Brauer & Bergenstamm, 1891). Increasing the total number of published tachinid species in Norway to 223.

## Material and methods

Records are presented in the following manner: Faunistic Region (Økland 1981), except that Langåsdalen is now a part of RY, Municipality, Location and European Invertebrate Survey grid-number (EIS) (Endrestøl 2005). Records of species presented in (Haraldseide 2012) are included only if they represent new locations (Faunistic Region or EIS grid-number) or if they are of special interest.

All specimens are hand-netted by the author and kept in the author's collection unless specified

otherwise. Species new to Norway are marked with an asterisk.

Identifications follow Tschorsnig & Herting (1994), Andersen (1988) for Phytomyzinae and Andersen (1996) for Siphonini, except in the case of *Siphona geniculata* (De Geer, 1776) and *Siphona cristata* (Fabricius, 1805) see Herting *et al.* (1999).

## The species

### DEXIINAE

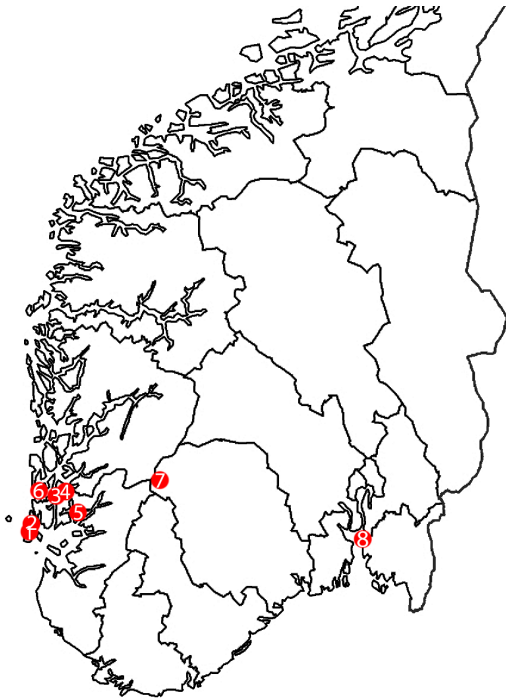
#### *Blepharomyia piliceps* (Zetterstedt, 1859)

**Material.** RY, Karmøy: Ferkingstadskogen (EIS 13) 4 May 2014, 4♂♂2♀♀; 20 May 2014, 2♀♀; 1 June 2013, 3♀♀; 2 June 2013, 1♂6♀♀; 4 June 2013, 2♀♀; 9 June 2013, 2♀♀; Grodvatnet 16 May 2013, 1♂; Suldal: Finnvik (EIS 14) 18 May 2014, 3♀♀.

**Remarks.** Active in low vegetation, especially *Vaccinium myrtillus*.

#### *Campylocheta inepta* (Meigen, 1824)

**Material.** HOY, Sveio: Mølstre (EIS 22) beginning of July 2013, 1♀ (Malaise trap);



**FIGURE 1.** Collecting sites. **1.** RY, Karmøy: Ferkingstadskogen, Mjåvatnet. **2.** Bygnes, Fotvatnet, Grodvatnet, Småvardane, Skår. **3.** Vindafjord: Tosvoll. **4.** Langåsdalen. **5.** Suldal: Finnvik, Ropeid. **6.** HOY, Sveio: Mølstre, Paddevegen. **7.** TEI, Vinje: Arbuvollen. **8.** Ø, Moss: Kambo.

July 2014, 1♀ (Malaise trap); **RY**, Karmøy: Ferkingstadskogen (EIS 13) 23 June 2013, 1♀; 28 June 2013, 1♀; 29 June 2014, 2♀♀; 7 July 2013, 1♀; Fotvatnet 14 July, 3♀♀; Mjåvatnet 17 July 2013, 1♀; Stiklevatnet 2 July 2013, 3♂♂2♀♀.

**Remarks.** Males and females active on *Picea*. Females also on *Vaccinium myrtillus* and *Erica*.

***Dinera ferina* (Fallén, 1817)**

**Material.** **RY**, Suldal: Finnvik (EIS 14) 20 July 2012, 2♂♂2♀♀; 29 July 2014 1♂; 1 August 2013, 1♀.

***Ramonda spathulata* (Fallén, 1820)**

**Material.** **RY**, Karmøy: Bygnes (EIS 13) 16 May 2014, 1♀; 15 September 2012, 1♀; Suldal: Finnvik (EIS 14) 1 June 2014, 1♂.

***Trafoia monticola* Brauer & Bergenstamm, 1893**

**Material.** **HOY**, Sveio: Mølstre (EIS 22) 7 July 2014, 1♂; 24 July 2012, 1♂1♀; 10 August 2014, 1♀.

**Remarks.** Observed feeding on flowers of *Angelica sylvestris* and *Solidago*. Populations seem to be very local.

***Trixa alpina* Meigen, 1824**

**Material.** **RY**, Suldal: Finnvik (EIS 14) 28 June 2012, 1♂; 14 June 2014, 1♂; 16 June 2013, 7♂♂.

***Trixa conspersa* (Harris, 1776)**

**Material.** **RY**, Suldal: Finnvik (EIS 14) 20 July 2012, 1♂; 11 August 2012, 1♂.

EXORISTINAE

***Admontia grandicornis* (Zetterstedt, 1849)**

**Material.** **HOY**, Sveio: Mølstre (EIS 22) July 2014, 1♀ (Malaise trap); **RY**, Karmøy: Skår (EIS 13) 3 July 2014, 1♂; 18 July 2014, 1♂.

***Allophorocera ferruginea* (Meigen, 1824)**

**Material.** **HOY**, Sveio: Mølstre (EIS 22) July 2014, 1♂ (Malaise trap); **RY**, Vindafjord: Langåsdalen (EIS 23) 9 July 2013, 1♂.

**Remarks.** Very common. Meadows, heathland and gardens. Low vegetation and flowers.

**\* *Bactromyia aurulenta* (Meigen, 1824)**

**Material.** **RY**, Suldal: Finnvik (EIS 14) 1 June 2014, 1♀; Ropeid 20 July 2014, 1♀.

***Belida angelicae* (Meigen, 1824)**

**Material.** **RY**, Karmøy: Ferkingstadskogen (EIS 13) 7 July 2013, 1♀; Vindafjord: Langåsdalen (EIS 23) 9 July 2012, 7♂♂; **TEI**, Vinje: Arbuvollen (EIS 25) 24 July 2013, 2♂♂1♀.

**Remarks.** Langåsdalen: ♂♂ congregating on sunlit foliage in mixed forest. Arbuvollen: Subalpine zone 820 meters.

***Blondelia nigripes* (Fallén, 1810)**

**Material.** **RY**, Karmøy: Grodvatnet (EIS 13) 27 July 2014, 2♂♂; Skår 31 July 2013, 1♂; Suldal: Finnvik (EIS 14) 1 August 2013, 1♂.

***Botria subalpina* Villeneuve, 1910**

**Material.** RY, Karmøy: Bygnes (EIS 13) 7 April 2012, 1♂; Grodvatnet 14 April 2012, 1♂.

***Cadurciella tritaeniata* (Rondani, 1859)**

**Material.** RY, Karmøy: Ferkingstadskogen (EIS 13) 23 June 2013, 1♀.

***Medina collaris* (Fallén, 1820)**

**Material.** RY, Suldal: Finnvik (EIS 14) 16 June 2012, 1♂1♀.

***Medina separata* (Meigen, 1824)**

**Material.** HOY, Sveio: Mølstre (EIS 22) July 2014, 1♂2♀♀ (Malaise trap); 2 August 2014, 1♂; RY, Vindafjord: Tosvoll (EIS 23) 26 July 2012, 1♀; Suldal: Finnvik (EIS 14) 26 August 2012, 1♀.

***Paracraspedothrix montivaga* Villeneuve, 1919**

**Material.** HOY, Sveio: Mølstre (EIS 22) July 2014, 2♀♀ (Malaise trap); RY, Karmøy: Skår (EIS 13) 23 August 2013, 1♀; 24 August 2012, 1♀.

**Remarks.** Observed feeding on flowers of *Angelica sylvestris*.

**\* *Paratryphera bisetosa* (Brauer & Bergengstamm, 1891) (Figure 2)**

**Material.** RY, Suldal: Finnvik (EIS 14) 1 July 2014, 3♀; 20 July 2012 3♀; 1 August 2014, 1♀.

**Remarks.** Low vegetation, especially *Vaccinium myrtillus*.

***Phebellia glauca* (Meigen, 1824)**

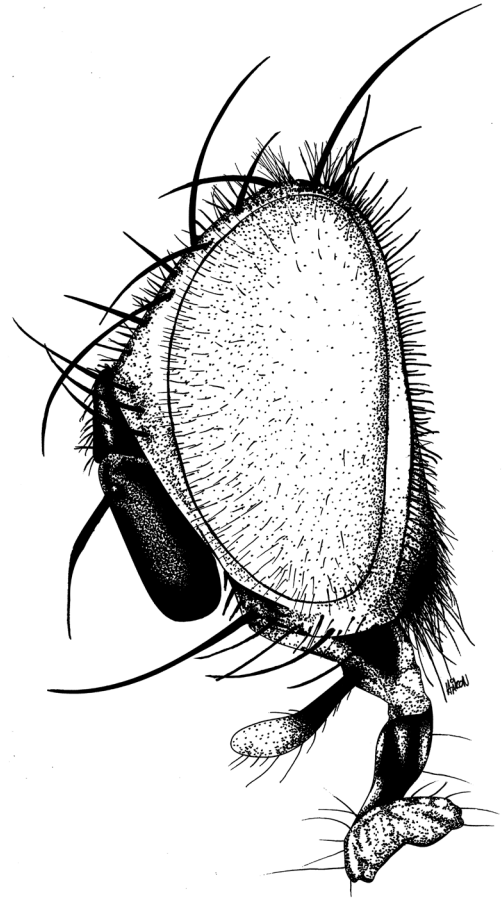
**Material.** RY, Suldal: Finnvik (EIS 14) host *Cimbex femoratus* (Linnaeus, 1758) (Hymenoptera, Symphyta) larva 26 August 2012, a single *Phebellia* larva ex host larva 4 September 2012, 1♂. Imago did not emerge, identification through dissection of puparium.

***Phebellia villica* (Zetterstedt, 1838)**

**Material.** RY, Karmøy: Skår (EIS 13) 19 July 2013, 1♀; 25 August 2013, 1♂.

***Platymya fimbriata* (Meigen, 1824)**

**Material.** HOY, Sveio: Mølstre (EIS 22) 7 July 2014, 6♂♂; RY, Suldal: Finnvik (EIS 14) 1



**FIGURE 2.** *Paratryphera bisetosa* (Brauer & Bergengstamm, 1891) female. Head, left lateral view.

June 2014, 1♀; 1 August 2014, 2♂♂; TEI, Vinje: Arbuvollen (EIS 25) 24 July 2013, 2♂♂1♀.

**Remarks.** Very common. Arbuvollen: Subalpine zone at 820 meters.

***Senometopia pollinosa* (Mesnil, 1941)**

**Material.** RY, Suldal: Ropeid (EIS 14) 1 August 2014, 1♂2♀♀; 23 August 2014, 1♂.

**Remarks.** The distinction between *Senometopia pollinosa* and *S. intermedia* might be difficult if no puparia are available, however, my specimens fit Tschorsnig & Herting's (1994) concept of *S. pollinosa*, and agrees with the descriptions of external characters, and figures and descriptions of both male and female terminalia of *S. pollinosa* in Bergström (unpublished). Active on *Chamerion angustifolium*.

***Staurochaeta albocingulata* (Fallén, 1820)**

**Material.** HOY, Sveio: Mølstre (EIS 22) 7 July 2014, 3♂♂2♀♀; **RY**, Suldal: Finnvik (EIS 14) 20 July 2014, 1♀.

**Remarks.** Visits flowers of *Angelica sylvestris*.

PHASIINAE

***Cinochira atra* Zetterstedt, 1845**

**Material.** RY, Suldal: Finnvik (EIS 14) July 2014, 1♀ (Malaise trap).

***Gymnosoma nudifrons* Herting, 1966**

**Material.** HOY, Sveio: Mølstre (EIS 22) 20 June 2013, 1♂; 7 July 2014, 3♂♂1♀; 30 July 2012, 4♂♂.

***Lophosia fasciata* Meigen, 1824**

**Material.** RY, Karmøy: Skår (EIS 13) 29 July 2012, 1♂; Skår 12 August 2012, 1♀; 24 August 2012, 1♀; 29 July 2013, 1♂; 19 August 2013, 1♀; Suldal: Finnvik (EIS 14) 20 July 2012, 1♂.

***Phasia aurulans* Meigen, 1824**

**Material.** RY, Suldal: Finnvik (EIS 14) 11 August 2012, 1♂.

**Remarks.** Feeding on *Persicaria affinis*.

***Subclytia rotundiventris* (Fallén, 1820)**

**Material.** RY, Karmøy: Skår (EIS 13) 13 July 2014, 1♂; 17 August 2013, 1♂; Suldal: Finnvik (EIS 14) 1 August 2013, 1♂1♀.

**Remarks.** Feeding on *Anaphalis* and *Angelica sylvestris*.

TACHININAE

***Actia crassicornis* (Meigen, 1824)**

**Material.** HOY, Sveio: Mølstre (EIS 22) 4 August 2013, 1♂; 7 July 2014, 3♂♂2♀♀; July 2014, 2♂♂1♀ (Malaise trap); **TEI**, Vinje: Arbuvollen (EIS 25) 24 July 2013, 3♂♂1♀.

**Remarks.** Arbuvollen: Subalpine zone at 820 meters.

***Actia nigroscutellata* Lundbeck, 1927**

**Material.** RY, Suldal: Finnvik (EIS 14) 1 August 2013, 1♂; 24 August 2013, 3♀.

***Actia pilipennis* (Fallén, 1810)**

**Material.** HOY, Sveio: Mølstre (EIS 22) 7 July 2014, 1♂; July 2014, 3♂♂ (Malaise trap); **RY**, Suldal: Finnvik (EIS 14) 1 August 2013, 1♂; 24 August 2013 1♀.

***Aphantorhaphopsis verralli* (Wainwright, 1928)**

**Material.** HOY, Sveio: Mølstre (EIS 22) August 2014, 1♀ (Malaise trap).

***Ceranthia lichtwardtiana* (Villeneuve, 1931)**

**Material.** RY, Suldal: Ropeid (EIS 14) 20 July 2014, 1♀; 1 August 2014, 2♀♀.

**Remarks.** Active on *Chamerion angustifolium*.

***Ceromya bicolor* (Meigen, 1824)**

**Material.** RY, Suldal: Finnvik (EIS 14) 1 July 2014, 1♂.

***Dexiosoma caninum* (Fabricius, 1781)**

**Material.** HOY, Sveio: Mølstre (EIS 22) 19 June 2014, 1♂; 20 July 2013, 1♂; 24 July 2012, 2♂♂1♀; **RY**, Karmøy: Skår (EIS 13) 4 August 2012, 1♂; 18 August 2012, 1♂; Suldal: Finnvik (EIS 14) 20 July 2012, 4♂♂2♀♀; 24 August 2013, 1♀; 26 August 2012, 1♂.

***Eurithia anthophila* (Robineau-Desvoidy, 1830)**

**Material.** RY, Suldal: Finnvik (EIS 14) 1 August 2014, 1♀.

***Eurithia connivens* (Zetterstedt, 1844)**

**Material.** HOY, Sveio: Mølstre (EIS 22) 7 July 2014, 1♀; 12 July 2014, 1♀; 20 July 2013, 4♂♂; 30 July 2012, 1♀; **RY**, Vindafjord: Tosvoll (EIS 23) 26 July 2012, 6♂♂.

***Gymnocheta viridis* (Fallén, 1810)**

**Material.** RY, Karmøy: Ferkingstadskogen (EIS 13) 22 June 2013, 1♀; 23 June 2013, 2♀♀; 2 July 2013, 2♀♀; Grodvatnet 26 May 2014, 1♀.

***Hyalurgus lucidus* (Meigen, 1824)**

**Material.** RY, Karmøy: Skår (EIS 13) 26 July 2013, 1♂; Skår 13 July 2014, 1♀.

***Loewia foeda* (Meigen, 1824)**

**Material.** HOY, Sveio: Mølstre (EIS 22) July

2014, 1♀ (Malaise trap); Paddevegen 10 August 2014, 1♀; **RY**, Suldal: Finnvik (EIS 14) 26 August 2012, 1♀.

***Lydina aenea* (Meigen, 1824)**

**Material.** **TEI**, Vinje: Arbuvollen (EIS 25) 24 July 2013, 9♂♂1♀.

**Remarks.** Subalpine zone at 820 meters. Four males with wing cell R5 petiolate.

***Lypha dubia* (Fallén, 1810)**

**Material.** **HOY**, Sveio: Mølstre (EIS 22) 15 April 2012, 1♂; **RY**, Suldal: Finnvik (EIS 14) 18 May 2014, 5♂♂2♀♀; 27 May 2012, 1♀.

**\* *Mintho rufiventris* (Fallén, 1817)**

**Material.** **Ø**, Moss: Kambo (EIS 19) 24 June 2010, 1♀. (leg. Gunnar Engan).

**Remarks.** Three previous Norwegian observations of *M. rufiventris* have been published through the online service Artsobservasjoner (<http://artsobservasjoner.no/smakryp/>), all from **AK** (EIS 19 and EIS 28).

***Panzeria rudis* (Fallén, 1810)**

**Material.** **HOY**, Sveio: Paddevegen (EIS 22) 5 July 2013, 1♀; **RY**, Karmøy: Skår (EIS 13) 24 June 2012, 1♂; 24 June 2013, 1♂.

***Pelatachina tibialis* (Fallén, 1810)**

**Material.** **HOY**, Sveio: Mølstre (EIS 22) end of June 2013, 1♀ (Malaise trap).

***Peribaea hertingi* Andersen, 1996**

**Material.** **RY**, Suldal: Ropeid (EIS 14) 23 August 2014, 1♀.

***Phytomyptera cingulata* (Robineau-Desvoidy 1830)**

**Material.** **HOY**, Sveio: Mølstre (EIS 22) July 2014, 1♀ (Malaise trap).

***Phytomyptera minutissima* (Zetterstedt, 1844)**

**Material.** **RY**, Karmøy: Skår (EIS 13) 2 June 2014, 1♂.

***Siphona confusa* Mesnil, 1961**

**Material.** **HOY**, Sveio: Mølstre (EIS 22) 18

May 2013, 1♀; 26 May 2013, 1♀; June 2013, 1♂ (Malaise trap). **RY**, Suldal: Finnvik (EIS 14) 20 April 2014, 1♂; 19 May 2013, 1♂; June 2013, 1♂ (Malaise trap); 16 June 2013, 1♀.

***Siphona cristata* (Fabricius, 1805)**

**Material.** **RY**, Karmøy: Småvardane (EIS 13) 17 July 2012, 1♂.

***Siphona flavifrons* Stæger, 1849**

**Material.** **HOY**, Sveio: Paddevegen (EIS 22) 10 August 2014, 1♀; **RY** Suldal: Finnvik (EIS 14) 20 July 2012, 1♂; 20 July 2014, 3♂♂.

***Siphona geniculata* (De Geer, 1776)**

**Material.** **HOY**, Sveio: Mølstre (EIS 22) 20 July 2013, 1♂; **RY**, Suldal: Finnvik (EIS 14) 24 August 2013, 1♂; Vindafjord: Tosvoll (EIS 23) 3 August 2013, 1♀; **TEI**, Vinje: Arbuvollen (EIS 25) 24 July 2013, 5♂♂2♀♀.

**Remarks.** Arbuvollen: Subalpine zone at 820 meters.

***Siphona hokkaidensis* Mesnil, 1957**

**Material.** **RY** Suldal: Finnvik (EIS 14) 20 July 2014, 1♂.

***Siphona setosa* Mesnil, 1960**

**Material.** **RY** Suldal: Finnvik (EIS 14) 24 August 2013, 1♀; **TEI**, Vinje: Arbuvollen (EIS 25) 24 July 2013, 3♂.

**Remarks.** Arbuvollen: Subalpine zone at 820 meters.

***Tachina fera* (Linnaeus, 1761)**

**Material.** **HOY**, Sveio: Mølstre (EIS 22) 7 July 2014, 1♂; 24 July 2012, 1♂; Paddevegen 5 July 2013, 1♂; **RY** Suldal: Finnvik (EIS 14) 6 July 2012, 1♂.

***Tachina grossa* (Linnaeus, 1758)**

**Material.** **HOY**, Sveio: Mølstre (EIS 22) 24 July 2012, 1♂.

## Discussion

The number of tachinid species in Norway has been estimated to 270 (Ottesen 1993). In Sweden the number of published species is much higher, about 370 (Bergström, pers. comm.). A slightly less conservative estimate of 300 Norwegian species still only include about 80% of the known Swedish species. Clearly, many Norwegian species still await discovery.

**Acknowledgements.** I am indebted to Christer Bergström (Uppsala, Sweden) for his comments and improvements to the manuscript, and for sharing his unpublished key to *Senometopia pollinosa* (Mesnil, 1941) and *S. intermedia* (Herting, 1960). I wish to thank to Gunnar Engan (Son, Norway) for donation of the *Mintho rufiventris* specimen, and express my gratitude to Theo Zeegers (Soest, The Netherlands) and Hans-Peter Tschorsnig (Stuttgart, Germany) for always being most helpful with all my queries.

## References

- Andersen, S. 1988. Revision of European species of *Phytomyptera* Rondani (Diptera: Tachinidae). *Entomologica scandinavica* 19, 43–80.
- Andersen, S. 1996. The Siphonini (Diptera: Tachinidae) of Europe. *Fauna Entomologica Scandinavica* (Vol. 33. E.J. Brill. 148 pp.) 33, 1–146.
- Endrestøl, A. 2005. Ny versjon av EIS-systemet for Norge. *Fauna (Oslo)* 58, 92–97.
- Haraldseide, H. 2012. Contributions to the knowledge of Norwegian Tachinidae (Diptera, Oestroidea) – Part 1, including an updated checklist. *Norwegian Journal of Entomology* 59, 43–58.
- Herting, B., Tschorsnig, H.-P. & J.E. O'Hara. 1999. Case 3084. *Musca geniculata* De Geer, 1776 and *Stomoxys cristata* Fabricius, 1805 (currently *Siphona geniculata* and *Siphona cristata*; Insecta, Diptera): proposed conservation of usage of the specific names by the replacement of the lectotype of *M. geniculata* by a neotype. *Bulletin of Zoological Nomenclature* 56, 235–239.
- Økland, K.A. 1981. Inndeling av Norge til bruk ved biografiske oppgaver – et revidert Strand-system. *Fauna (Oslo)* 34, 167–178.
- Ottesen, P.S. (ed.). 1993. Norske Insektfamilier og deres artsantall. *NINA utredning* 055, 1–40.
- Tschorsnig, H.P. & Herting, B. 1994. Die Raupen-

fliegen (Diptera: Tachinidae) Mitteleuropas. Bestimmungstabellen und Angaben zur Verarbeitung und Ökologie der einzelnen Arten. *Stuttgarter Beiträge zur Naturkunde, Serie A* 506, 1–170.

Received: 30 October 2014  
Accepted: 26 November 2014