

First record of *Brachypsyche sibirica* (Martynov, 1924) (Trichoptera, Limnephilidae) from Norway

HALLVARD ELVEN & TROND ANDERSEN

Elven, H. & Andersen, T. 2020. First record of *Brachypsyche sibirica* (Martynov, 1924) (Trichoptera, Limnephilidae) from Norway. *Norwegian Journal of Entomology* 67, 5–7.

Brachypsyche sibirica (Martynov, 1924) (Trichoptera, Limnephilidae) is recorded for the first time in Norway based on a male specimen collected in Lom in 1963 by Carl Fredrik Lühr. The species has a Palearctic distribution and is found from Fennoscandia through Russia eastwards to Japan. It overwinters as an adult and can be found from late august until the onset of winter, and again in the spring.

Key words: Trichoptera, Limnephilidae, *Brachypsyche sibirica*, Norway, new record.

Hallvard Elven, Natural History Museum, University of Oslo, P.O. Box 1172 Blindern, NO-0318 Oslo, Norway. E-mail: hallvard.elven@nhm.uio.no

Trond Andersen, Department of Natural History, University Museum of Bergen, University of Bergen, P.O. Box 7800, NO-5020 Bergen, Norway. E-mail: trond.andersen@uib.no

Introduction

A male specimen of *Brachypsyche sibirica* (Martynov, 1924), collected in Lom in 1963, was discovered in the insect collection at the Natural History Museum, University in Oslo (NHM) in 2020. This represents the first and hitherto only record of the species in Norway.

Brachypsyche sibirica was described by Martynov (1924: 342) as *Glyphopsyche irrorata sibirica* from Siberia in Russia. It belongs in the tribe Chilostigmini Schmid, 1955 of the family Limnephilidae Kolenati, 1848 and is distributed from Fennoscandia through Russia eastwards to Hokaido in Japan (Nozaki & Itou 1993, Vshivkova & Nikolayeva 2018). The genus includes two other species: *Brachypsyche rara* (Martynov, 1914), distributed in the continental parts of East Palearctic, and *B. schmidi* Choe, Kumanski & Woo, 1999, on the Korean Peninsula and in

Primorye Territory in East Russia (Vshivkova & Nikolayeva 2018).

In Fennoscandia *Brachypsyche sibirica* is previously known to occur in the northern and central parts of Sweden and the northern parts of Finland. In Sweden it is recorded from Dalarna, Härjedalen, Norrbotten, Lycksele Lappmark, Lule Lappmark, and Torne Lappmark (ArtDatabanken 2020, Gullefors 2002, Senckenberg, 2020). In Finland the species has been found in Ostrobothnia borealis, N part, Kuusamo, Lapponia kemensis, W part, Lapponia kemensis, E part, and Lapponia inarensis (Rinne & Wiberg-Larsen 2017).

Description and biology

The adult (Figure 1) is large, with a forewing length of 17–22 mm in the males and 20–24 mm in the females (Salokannel & Mattlia 2018). The

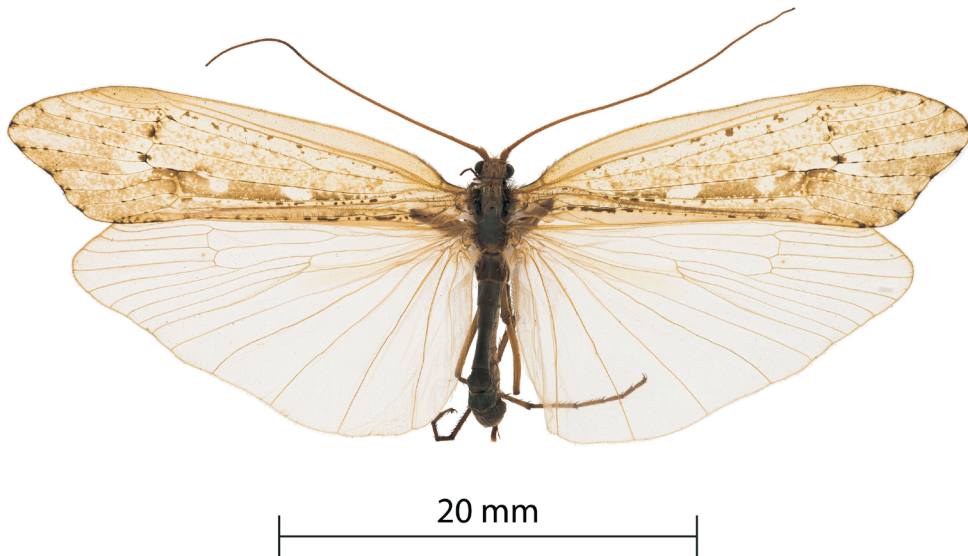


FIGURE 1. The male specimen of *Brachypsyche sibirica* (Martynov, 1924) collected by Carl Fredrik Lühr in Lom in 1963.



FIGURE 2. The label accompanying the specimen.

fore wing is pale yellowish brown with darker mottles, and with more pronounced dark spots at the apex of the disc cell, at the R-M crossvein, and at the points where the longitudinal veins meet the outer wing margin. The wing tip is slightly notched. In Finland the larva lives in cold, groundwater fed brooks, where it builds straight, cylindrical cases of thin bark pieces (Rinne & Wiberg-Larsen 2017). The species hibernates as adult. The flight in Finland starts in late August, continues until winter, and is resumed in spring, lasting until June (Salokannel & Mattlia 2018). In Dalarna in Sweden, the species has been

observed in December and in late January flying over deep snow (Forsslund 1949). The only other Scandinavian Limnephilidae with a similar life cycle is *Chilostigma sieboldi* McLachlan, 1876 (Gullefors 2005, Andersen & Hagenlund 2018).

The record

Brachypsyche sibirica (Martynov, 1924)
(Figure 1).

Material: INNLANDET: Lom, 1♂, 16 May 1963, leg. C.F. Lühr, coll. NHMO.

The specimen was found in a drawer with unsorted, unidentified caddisflies in the insect collection at the NHM. According to the label information (Figure 2), the specimen was collected by Carl Fredrik Lühr in Lom municipality (Innlandet county) on 16 May 1963. Lühr was an active lepidopterologist who lived in Vågå municipality and did much of his collecting in the nearby Lom (Sømme 2004). The site lies in the southern mountain range in Norway, which is surprising as *Brachypsyche sibirica* otherwise appears to have a mostly northern/

eastern distribution in Fennoscandia. Based on the records in Sweden and Finland, it was expected that *Brachypsyche sibirica* might occur in Troms and Finnmark county in the northmost part of Norway, but it was not expected so far south and west. The species has not been recorded in the region since 1963, but due to its special life cycle it might have been overlooked. One might also speculate that the specimen has been mislabeled, as Lühr also collected very actively in the northernmost parts of the country and could have found it there. However, in mid-May Lühr would be far more likely to collect in Lom, close to home, than in the northern part of Norway.

- Sømme, L. 2004. *Entomologiens historie i Norge. Norsk entomologisk forening, 1904 – 2004*. 326 pp. Norsk entomologisk forening, Oslo.
- Vshivkova, T.S. & Nikolayeva, A.A. 2018. *A new record of Brachypsyche sibirica (Martynov, 1924) (Insecta: Trichoptera, Limnephilidae, Limnephilinae, Chilostigmini) from Kamchatka Peninsula, Far East of Russia*. Pp. 92–94 in The 1st International Conference on North East Asia Biodiversity, September 17–21, 2018. Abstracts. Federal Scientific Centre of the East Asia Terrestrial Biodiversity FEB RAS, Vladivostok, Russia.

Received: 17 March 2020

Accepted: 23 April 2020

References

- Andersen, T. & Hagenlund, L.K. 2018. Vårfluer på rikmyrer i nordre Hedmark. *Fauna* 71, 12–30.
- ArtDatabanken 2020. Artportalen, ArtDatabanken. Available from: <https://www.artportalen.se/> (Accessed 11 March 2020).
- Forsslund, K.-H. 1949. *Nattsländor eller laxmyggor*. Pp. 175–185 in Lindroth, C.H. (Ed.), Svenska Djur. Insekterna. Norstedts, Stockholm.
- Gullefors, B. 2002. Sveriges nattsländor (Trichoptera), en provinskatalog med nyare fynduppgifter. *Entomologisk Tidskrift* 83, 231–236.
- Gullefors, B. 2005. Två nattsländearter (Trichoptera) på snö i Sverige. *Entomologisk Tidskrift* 126, 85–87.
- Martynov, A.V. 1924. *Rucheiniki [caddisflies] (Trichoptera)*. In: Bogdanova-Kat'kova, N.N. (Ed.), Prakticheskaya Entomologiya [Practical Entomology], Leningrad, 5, 1–388. [in Russian].
- Nozaki, T. & Itou, M. 1993. A new record of *Brachypsyche sibirica* (Martynov) (Trichoptera, Limnephilidae) from Hokkaido, northern Japan. *Japanese Journal of Entomology* 61, 174.
- Rinne, A. & Wiberg-Larsen, P. 2017. *Trichoptera larvae of Finland: Identification key to the Caddis larvae of Finland and nearby countries*. 151 pp. Trificon, Tampere, Finland.
- Salokannel, J. & Mattlia, K. 2018. *Suomen vesiperhoset. Trichoptera of Finland*. 445 pp. Hyönteistarvike Tibiale Oy, Helsinki, Finland.
- Senckenberg, 2020. Collection Trichoptera - SMF. Occurrence dataset <https://doi.org/10.15468/ulgutl> accessed via GBIF.org on 2020-03-10. <https://www.gbif.org/occurrence/472639522>